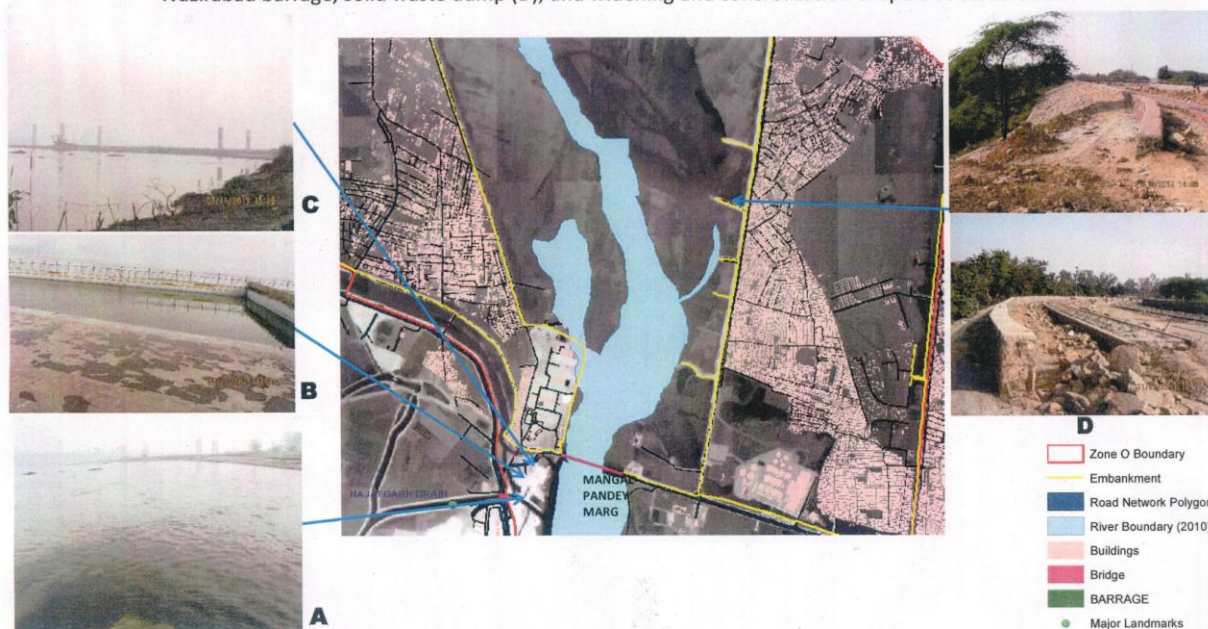


Figure 1: Confluence of Najafgarh drain with the river Yamuna (A), Surghat area (B) and water course of the river (C) just after Wazirabad barrage, solid waste dump (D), and widening and concretization of spurs at Sarita Vihar



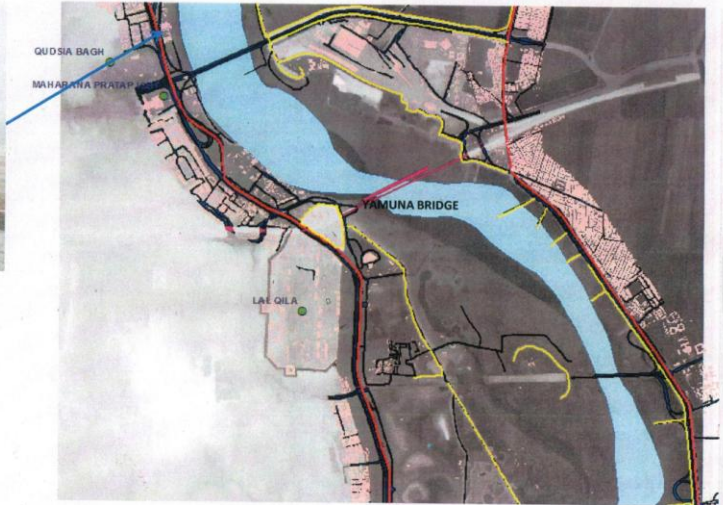
69

FIGURE 2: Garbage and waste dumps used to reclaim the marshes (A) and water bodies (B) along the Pusta road



70

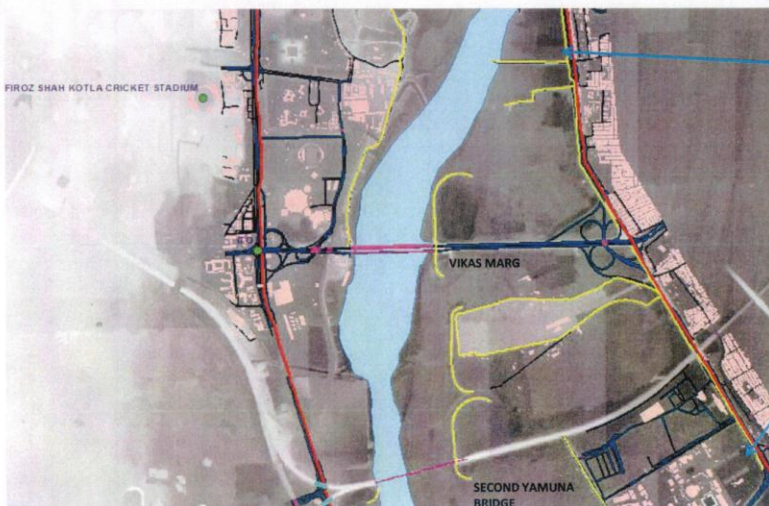
Figure 3: Filled up area in the river bed at Qudesia Ghat



- Zone O Boundary
- Embankment
- Road Network Polygon
- River Boundary (2010)
- Buildings
- Bridge
- BARRAGE
- Major Landmarks

71

Figure 3A: Widening of roads on to the flood plains (A) using relocated solid waste dumps at Pusta road and paved car parking of Akshardham on the flood plain (B)



A



B

- Zone O Boundary
- Embankment
- Road Network Polygon
- River Boundary (2010)
- Buildings
- Bridge
- BARRAGE
- Major Landmarks

72

Figure 3B: Nursery and encroachment on the flood plain (A) and road construction on the narrow strip of flood plain to separate Millenium Bus Depot



73

Figure 4: Encroachment of floodplain at DND flyover



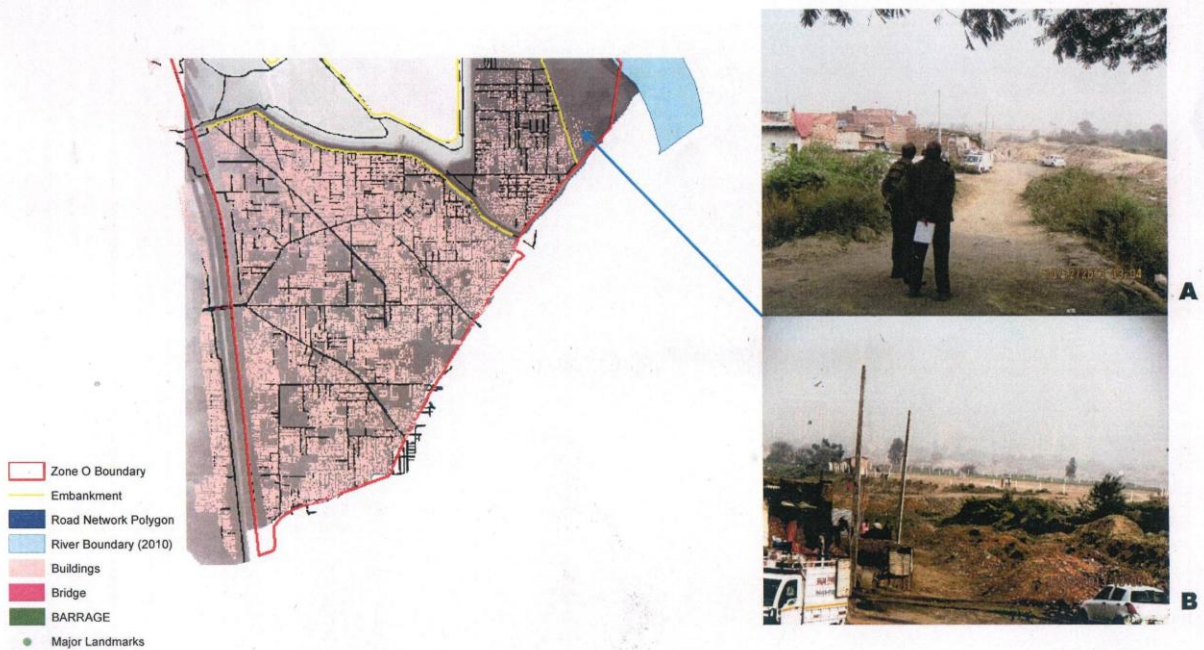
74

Figure 4A: Solid waste material used for construction of roads to the temple across the flood plain (A) and solid waste used for reclamation of flood plain for temple and DMRC unit (B)



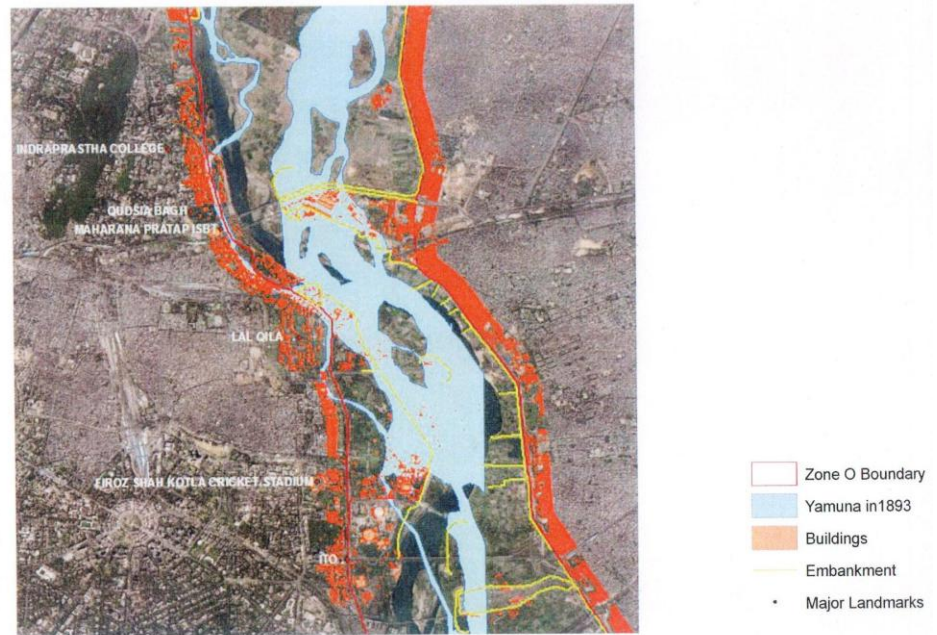
75

Figure 5: On going construction activity and dumping of solid waste on the active flood plains at Jaitpur



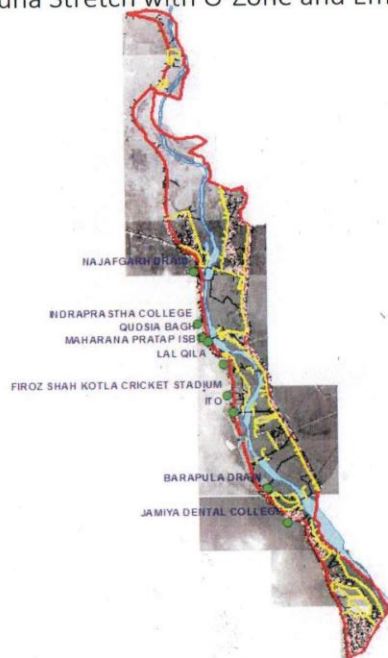
76

Figure 6: Yamuna in 1893 with O-Zone boundaries (2010) and Encroachment in 2012



77

FIGURE 7: Yamuna Stretch with O-Zone and Embankments



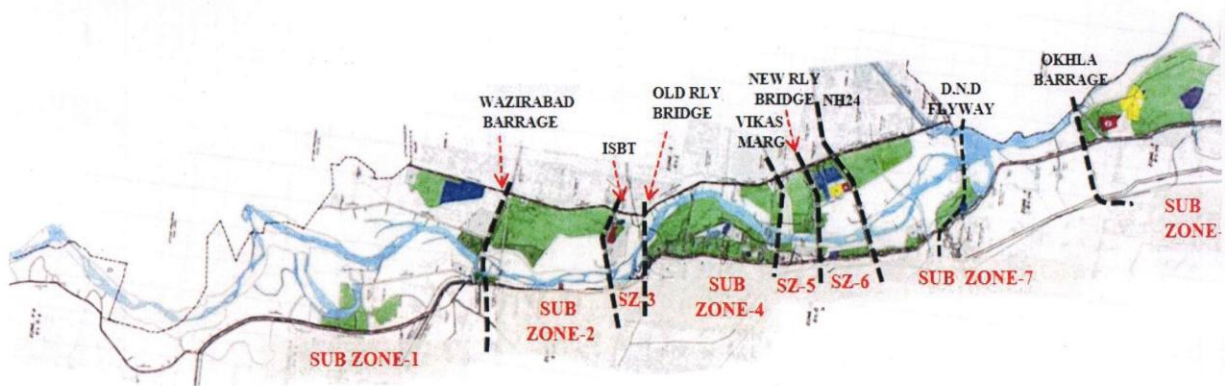
78

Figure 8: Land Use Land Cover Of Yamuna River Flood plain of NCT of Delhi and UP portion



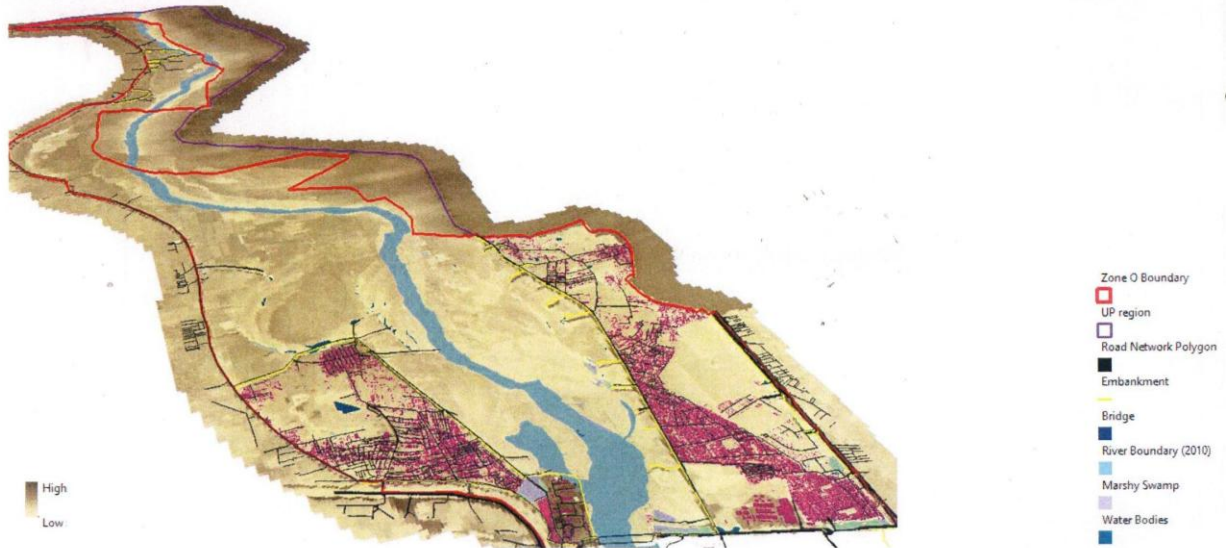
79

FIGURE 9: Map showing O-Zone and subzones



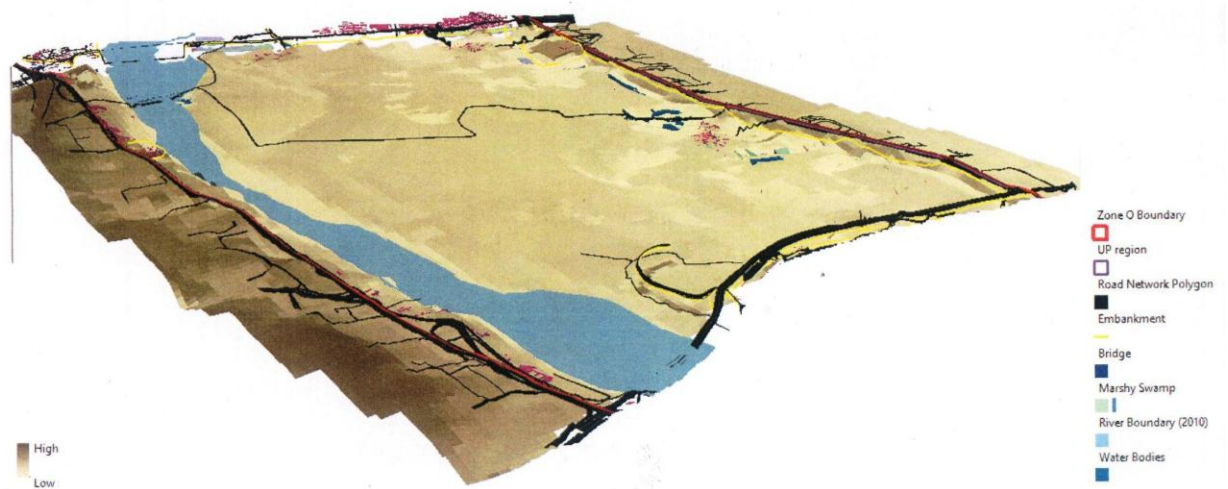
80

Figure 10
Subzone I: UP Border - Wazirabad Barrage



01

Figure11
Subzone II: Wazirabad Barrage- ISBT Bridge



02

Figure 12
Subzone III: ISBT Bridge - Old Rly Bridge



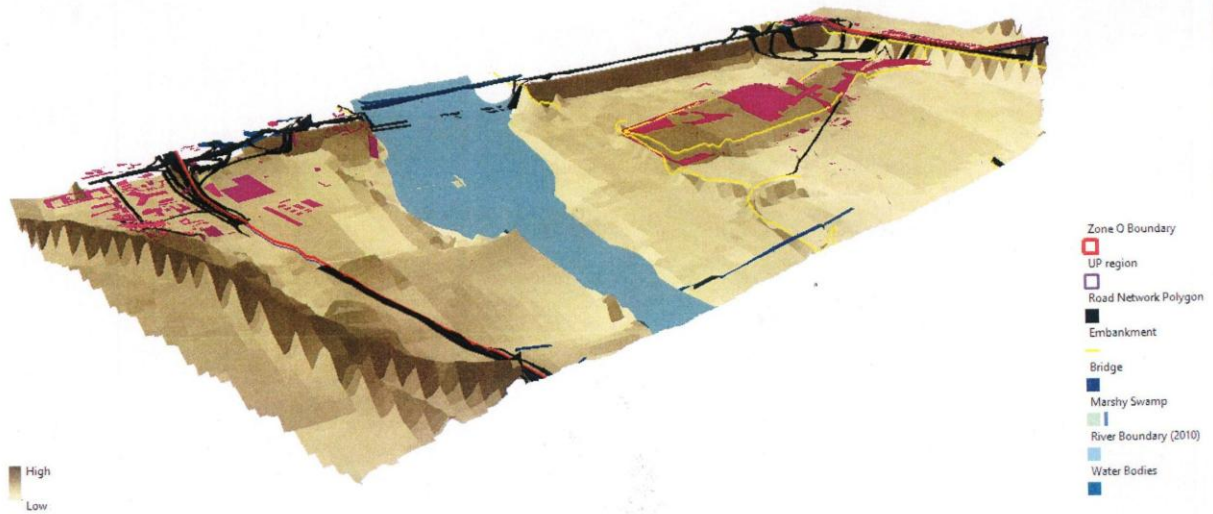
83

Figure 13
Subzone IV: Old Rly Bridge - I.P. Barrage



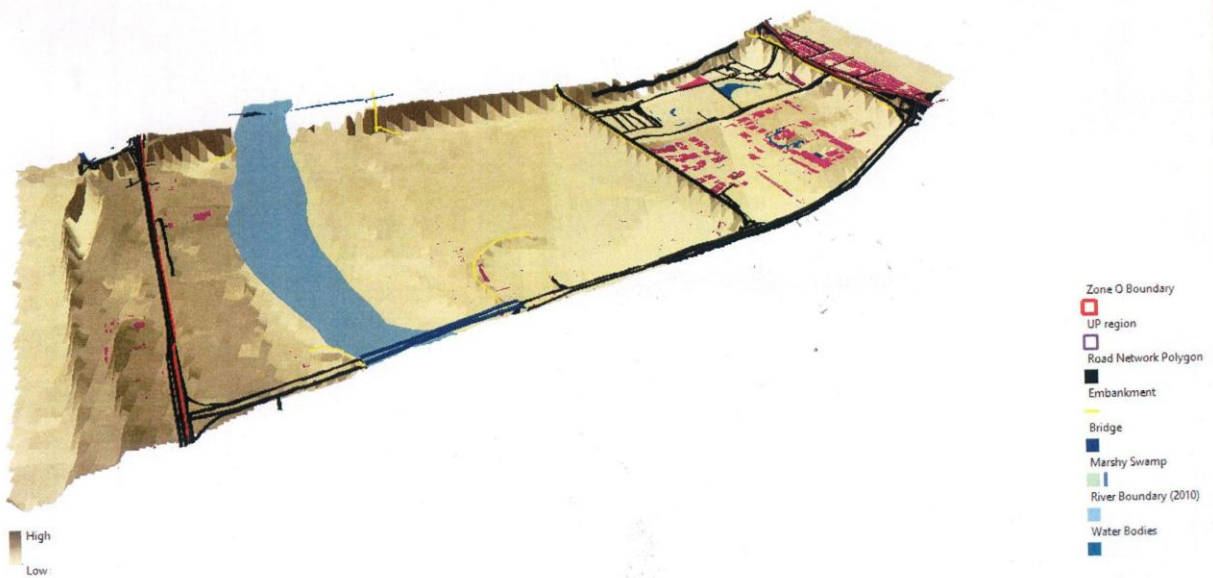
84

Figure 14
Subzone V: I.P. Barrage - New Rly Bridge



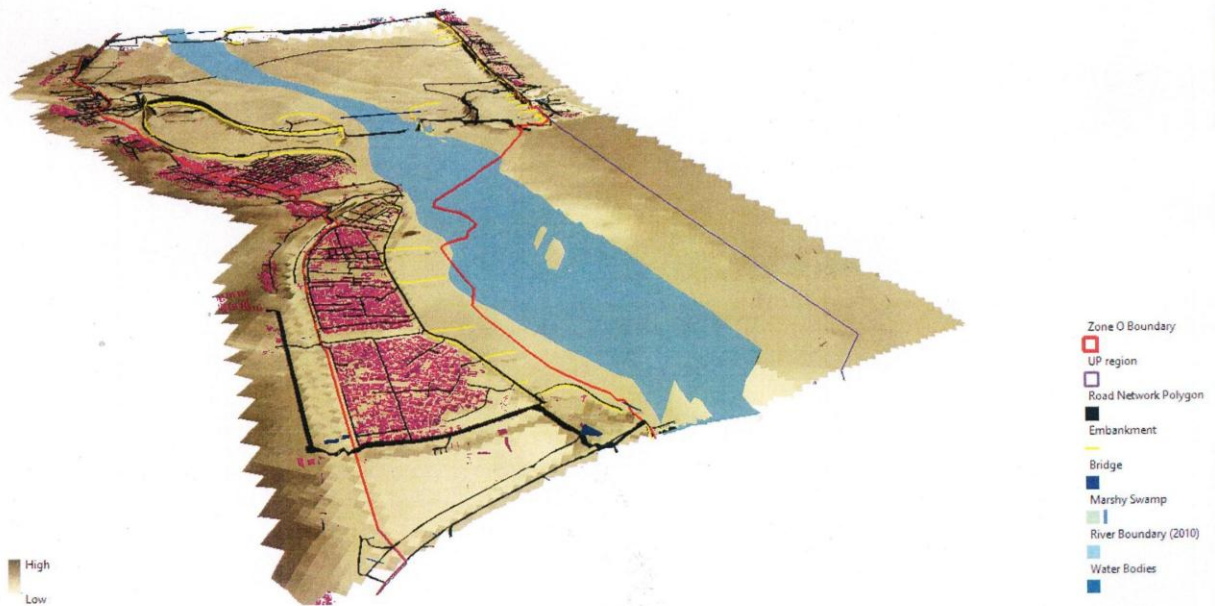
85

Figure 15
Subzone VI: New Rly Bridge - NH 24 Bridge



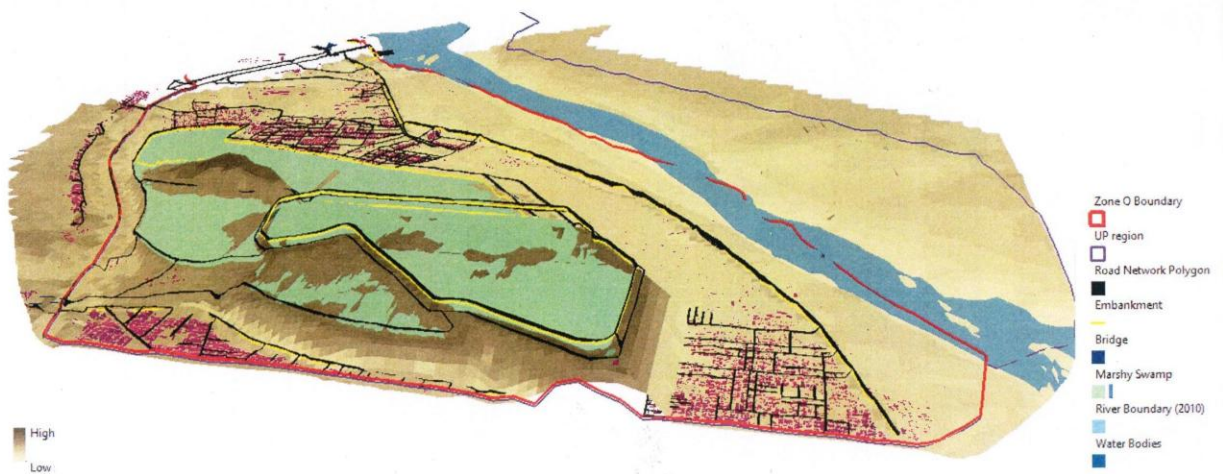
86

Figure 16
Subzone VII: NH24 Bridge - Okhala Barrage



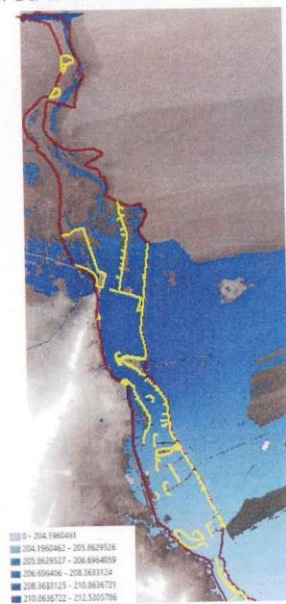
07

Figure 17
Subzone VIII: Okhala Barrage- Haryana Border

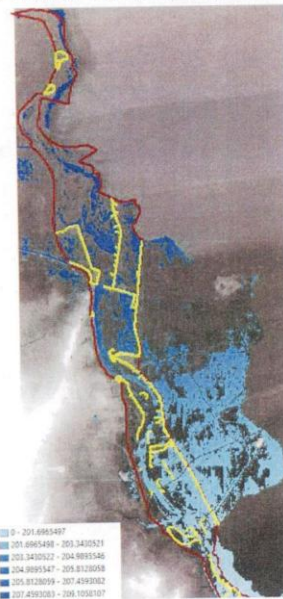


08

FIGURE 18: Area inundation derived using observed water levels for the respective floods



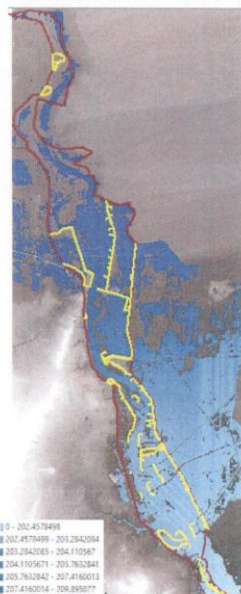
Flood 1978 (30 years)



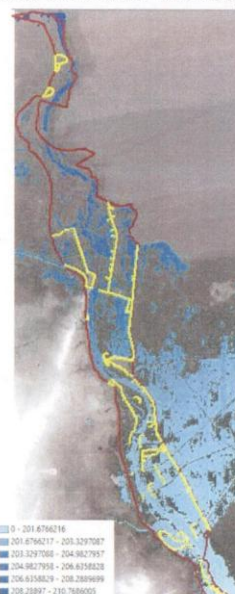
Flood 1991 (Lowest)

89

FIGURE 19: Area inundation derived using observed water levels for the respective floods



Flood 2003 (25 years)



Flood 2004 (10 years)

90