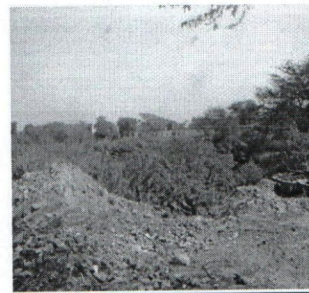


**33. Jhatikra:-**

**Kh. No. 84(19-4).**

It belongs to BDO. It has dirty water due to sewage inflow from adjoining habitats into the water body. Encroachment is found by the villagers on the ponds land in the form of temple. Boundary wall is found broken. Water body land has been converted into dumping yard. Sewage work has not been started by the Delhi Jal Board as yet. Trees have been cut by Prakash contractors. Court Commissioner directed BDO to take action against illegal activities there.



**28°31.281'N  
76°57.884'E  
Alt.- 205 m**

**34. Daryapur Khurd:-**

**Kh. No. 321(26-00).**

It belongs to BDO. Dry. Garbage and debris are found dumped at site. Wild plantation is there. Boundary wall is little bit broken. No encroachment present in field.



**28°32.965'N  
76°55.019'E  
Alt.- 016 m**

**35. Daryapur Khurd:-**

**Kh. No. 66/11 (11-1).**

It belongs to BDO. Dry. Nobody from revenue department was present. DSIIDC had developed the site. Unauthorized construction. Land has been occupied by villagers illegally. Court Commissioner directed BDO and I&FC to demarcate the land of water body and submit the report.

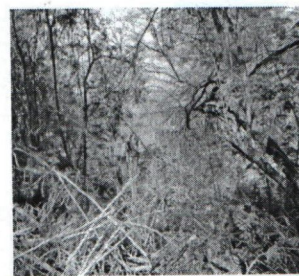


**28°33.057'N  
76°54.614'E  
Alt.- 203 m**

**36. Daryapur Khurd:-**

**Kh. No. 6//26(2-9).**

It belongs to BDO. Nobody from the revenue department was present. This is disputed land. It is underdeveloped and has dirty water. Large number of cow dung was spotted at site. It can be revive/developed very well. No sewage flow. Unauthorized construction. Khasra no. cannot be identified correctly due to absence of revenue staff. Delhi Jal Board had submitted an affidavit in the Delhi High Court in 2009 to complete the sewage work by 2012 but the same has not been started till date.



**28°33.353'N  
76°54.652'E  
Alt.- 203 m**

**37. Ujwa:-**

**Kh. No. 123(3-12).**

It belongs to BDO. It is a natural pond and is dry. Plantation has been done earlier.

**28°33.363'N  
76°54.660'E**



38. Ujwa:-

Kh. No. 129(16-4).

It belongs to BDO. Boundary wall is completed and is dry. Horticulture Unit has completed the plantation and handed over to Forest Deptt.

28°33.981'N  
76°55.435'E  
Alt.- 200 m

39. Ujwa:-

Kh. No. 107(6-0).

It belongs to BDO. Boundary wall is completed. Clean water by electric tubwell used for animals by the villagers. On the right side of water body there is a Shamshan Ghat.



28°33.844'N  
76°54.648'E

40. Ujwa:-

Kh. No. 109(4-0).

It belongs to BDO. Boundary wall is completed. Wet. Plantation has been done by horticulture unit.

41. Ujwa:-

Kh. No. 105(9-12).

It belongs to BDO. It is dry and has dirty water. Sewage is flowing into the water body. Boundary wall is found broken. Sewage water used by the farmers for irrigation.

28°33.957'N  
76°54.274'E  
Alt.- 202

42. Ujwa:-

Kh. No. 98(23-15).

It belongs to BDO. Clean water found in the water body coming from the tube well. Temple exists in the corner of the water body land.

28°34.264'N  
76°54.220'E  
Alt.- 199

43. Ujwa:-

Kh. No. 103(4-11).

It belongs to BDO and is dry. Boundary wall is completed but Repair and maintenance is required.

28°34.211'N  
76°54.096'E  
Alt.- 202

44. Ujwa:-

Kh. No. 113(9-0).

It belongs to BDO. Dirty water. Sewage is flowing into the water body. Garbage has found dumped at site. Encroachment is found at the water body. Court Commissioner directed the BDO to vacate the water body land and make it free from encroachment.



28°34.109'N  
76°54.401'E  
Alt.- 202

45. Jafar Pur Kalan:-


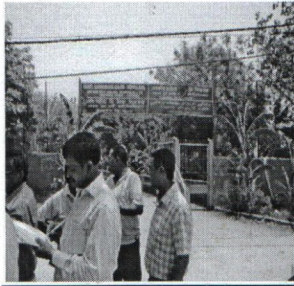

Kh. No. 896 (7-16).

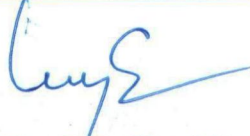
It belongs to BDO. Extremely dirty water present there. Sewage is flowing into the water body. Garbage has found dumped at site. Court Commissioner directed the revenue staff to demarcate the land by 20.6.2014 and submit the report.



28°35.392'N  
76°55.297'E  
Alt.- 203



46.	<p><b><u>Jafar Pur Kalan:- Kh. No. 473(6-1).</u></b></p> <p>It belongs to BDO. It has dirty water and is a natural pond. Villagers demanded that the ponds may be connected with rain water channel. Temple exists on the side of water body.</p>	 <p><b>28°35.502'N 76°55.095'E Alt.- 203</b></p>
47.	<p><b><u>Jafar Pur Kalan:-</u></b></p> <p><b><u>Kh. No. 256(6-9).</u></b></p> <p>It belongs to BDO. Govt. Sarvodaya School exists on the water body land. Revenue Deptt. to clear the actual position of water body and demarcation to be done.</p>	 <p><b>28°35.620'N 76°55.019'E Alt.- 203</b></p>
48.	<p><b><u>Jafar Pur Kalan:-</u></b></p> <p><b><u>Kh. No. 289(13-6).</u></b></p> <p>It belongs to BDO. The water body area falls in Chaudhary Brahm Prakash Navodaya School. Revenue Deptt. to furnish the record and provide the actual position of water body.</p>	 <p><b>28°35.631'N 76°54.578'E Alt.- 201</b></p>

  
**(Dr. S.D. Singh)**  
**CEO-DPGS,**  
**Nodal Officer, Water Bodies**